



**SANTA MARIA VALLEY
FIGHTING BACK
JUNE 2019**



CALIFORNIA HEALTHY KIDS SURVEY
HIGH INTEREST SURVEY RESULTS, 2013-2019



Key Terms

- NT = Non Traditional School
- Cal-Schls System
- CHKS = California Healthy Kids Survey
- California School Climate Index
- %, numbers show percentages of students taking the survey

Easy Access for Teachers, Parents, and Administrators to View the Data Online

CalSCHLS

About · Administration · Reports & Data · Resources ·

California School Climate, Health, and Learning Surveys

Helping schools and communities build positive environments for student success

About CalSCHLS Survey Administration **Reports & Data** Resources

News

2015-17 County Reports now available. New data on Dashboard — read more.

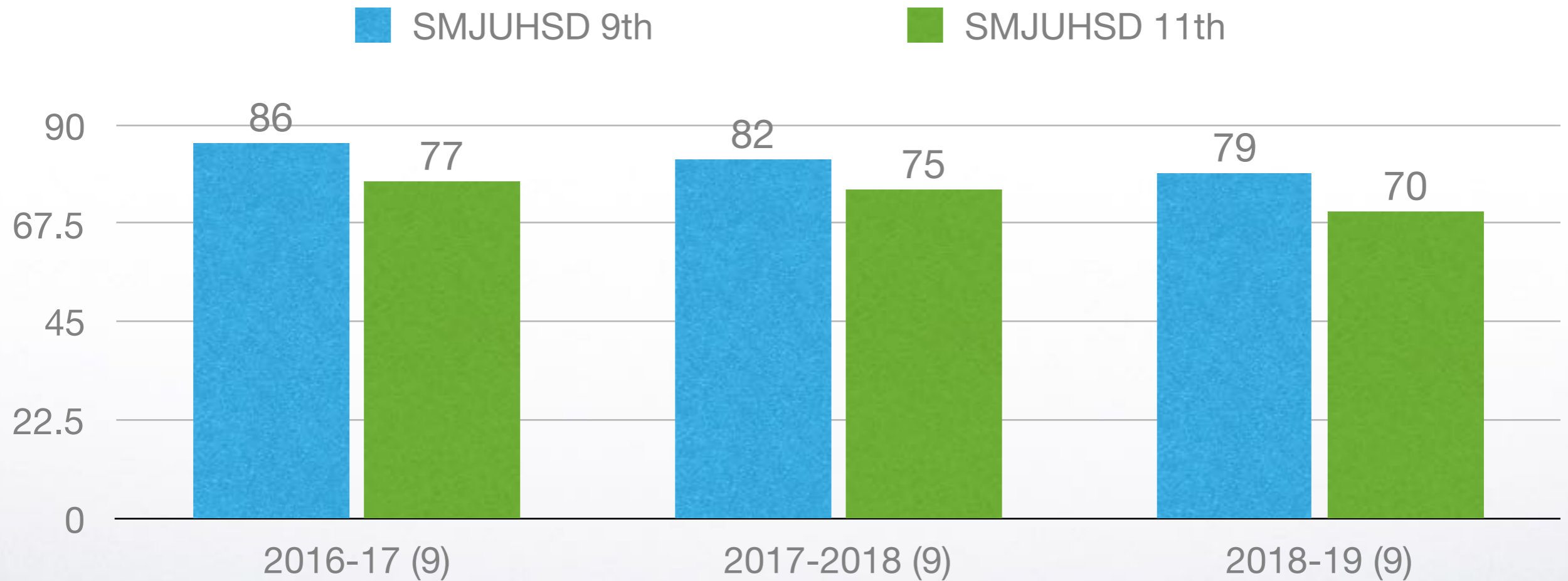
A tool supported by the California Department of Education to help districts meet Local Control Accountability Plan priorities to improve school climate, pupil engagement, parent involvement, and academic achievement.



CalSchls Dashboard



Response Rate



SM-B

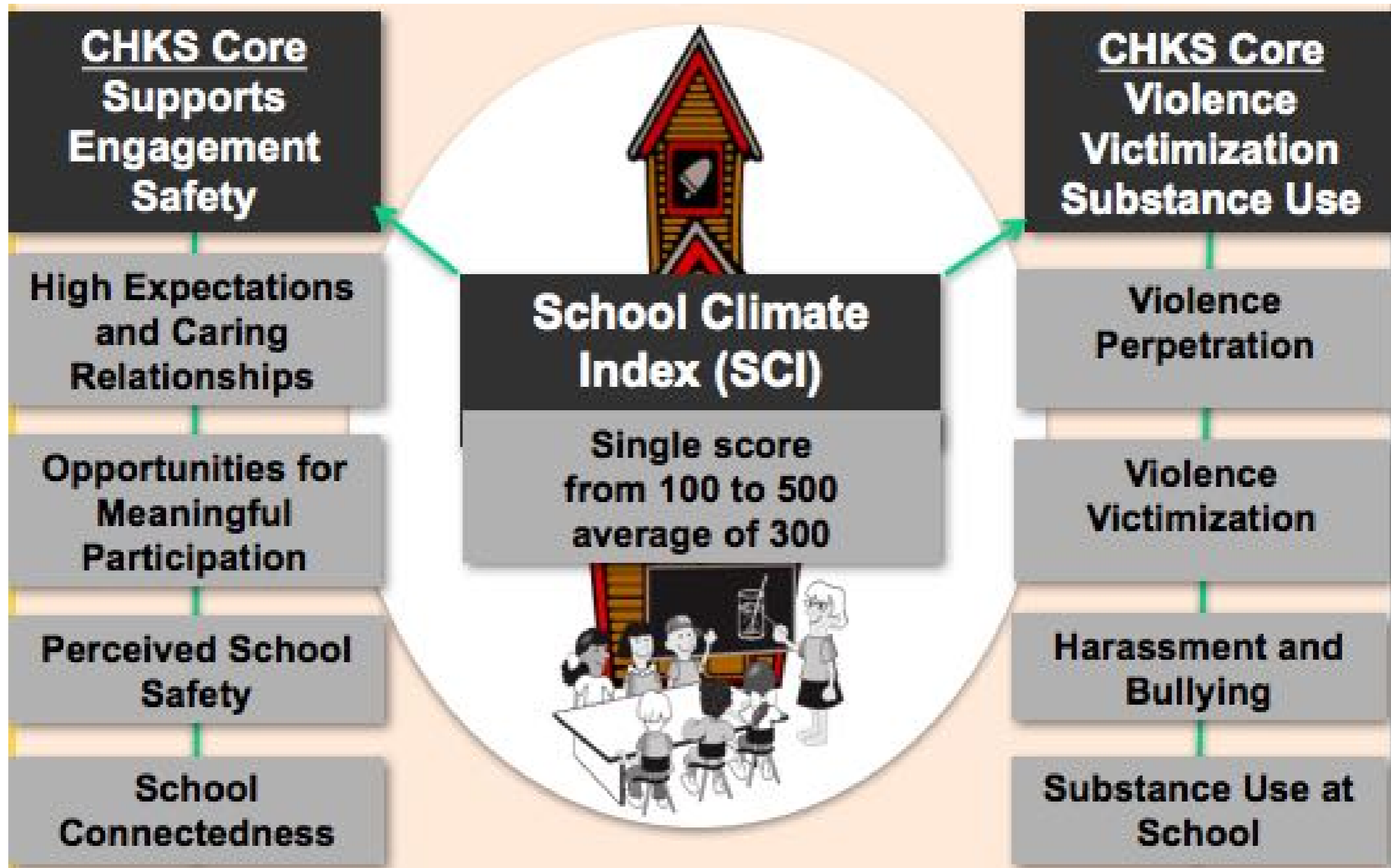
93%

89%

93%

California School Climate Index

The charts in this report are organized to show student responses to items in each of the School Climate Index domains shown below



School Climate Index

Example District Level SCI Report

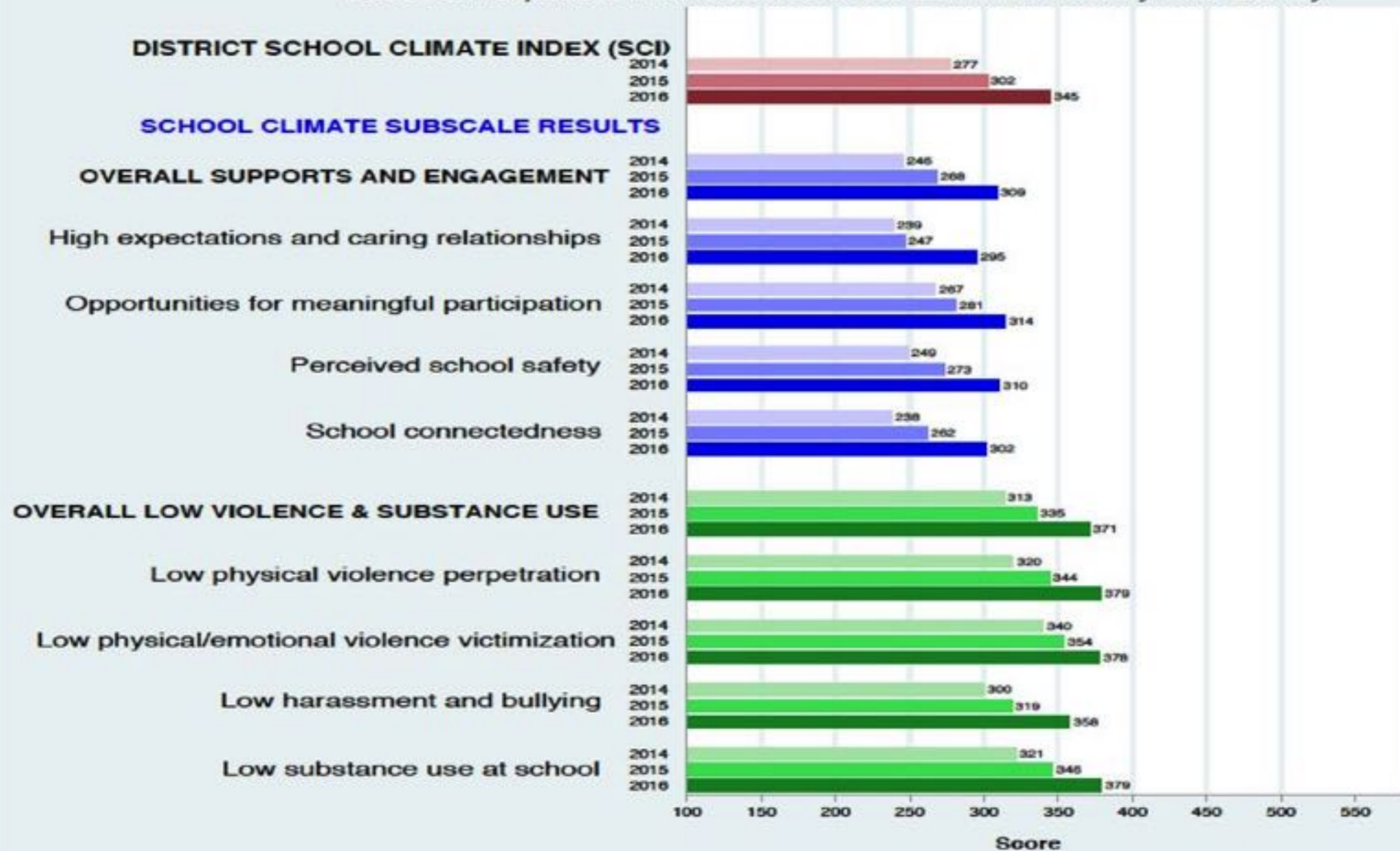
District School Climate Index (SCI)

	2014	2015	2016	Change
Average Score ^A	277	302	345	+68
State Percentile for Avg. School ^B	33	55	81	+48
Similar Schools Percentile for Avg. School ^B	47	63	93	+46

Middle School

District School Climate Index Scores (2014 to 2016)

Based on responses from students to the California Healthy Kids Survey



High Expectations & Caring Relationships



CHKS Santa Maria Schools
 School Connectedness: **...who really cares about me.**



Grade	2016-17	2017-18	2018-19	2019-20
7	65	57	61	
9	53	49	49	
11	58	55	52	
NT	72	66	65	

% Agree + Strongly Agree

CHKS Santa Maria Schools

Caring Relationships: ...who tells me when I do a good job.



Grade	2016-17	2017-18	2018-19	2019-20
7	75	70	72	
9	65	61	60	
11	64	61	62	
NT	80	79	72	

% Pretty Much True + Very Much True

CHKS Santa Maria Schools
 Caring Relationships: ...who notices
 when I am not there.



Grade	2016-17	2017-18	2018-19	2019-20
7	63	57	63	
9	53	52	50	
11	55	53	51	
NT	74	71	65	

% Pretty Much True + Very Much True

CHKS Santa Maria Schools
 Caring Relationships: **...who always
 wants me to do my best.**



Grade	2016-17	2017-18	2018-19	2019-20
7	89	83	83	
9	76	72	72	
11	73	70	70	
NT	86	82	78	

% Pretty Much True + Very Much True

CHKS Santa Maria Schools
 Caring Relationships: **...who listens
 when I have something to say.**



Grade	2016-17	2017-18	2018-19	2019-20
7	75	70	72	
9	63	59	60	
11	64	62	62	
NT	81	73	73	

% Pretty Much True + Very Much True

CHKS Santa Maria Schools

Caring Relationships: ...who believes that I will be a success.



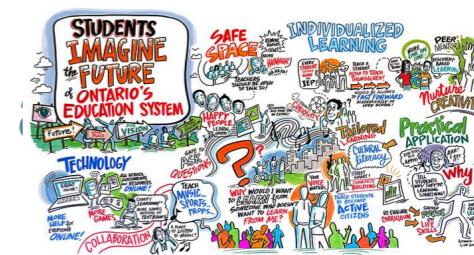
Grade	2016-17	2017-18	2018-19	2019-20
7	84	76	78	
9	70	68	66	
11	68	65	63	
NT	81	77	74	

% Pretty Much True + Very Much True

Meaningful Participation



CHKS Santa Maria Schools
 Meaningful Participation: **I do interesting school.**



Grade	2016-17	2017-18	2018-19	2019-20
7	56	48	50	
9	43	43	42	
11	45	43	42	
NT	51	42	36	

% Agree + Strongly Agree

Meaningful Participation: I help decide things like class rules or activities.



Grade	2016-17	2017-18	2018-19	2019-20
7	27	20	22	
9	19	19	18	
11	23	22	19	
NT	35	29	25	

% Agree + Strongly Agree

CHKS Santa Maria Schools

Meaningful Participation: I do things that make a difference at school.



Grade	2016-17	2017-18	2018-19	2019-20
7	36	30	31	
9	24	26	24	
11	28	30	27	
NT	38	33	30	

% Agree + Strongly Agree

Perceived School Safety



Safe Schools
Healthy Students

Perceived School Safety: **How safe do you feel at school?**



Grade	2016-17	2017-18	2018-19	2019-20
7	65	55	59	
9	58	56	55 6/ 7/ 32/ 43/ 12	
11	55	51	48 5/ 10/ 37/ 39/ 9	
NT	75	71	65 3/ 2/ 29/ 44/ 21	

% “safe” or “very safe” (Very Safe / Safe / Neither / Unsafe / Very Unsafe, when shown)

School Connectedness, Belonging, Membership



CHKS Santa Maria Schools
 School Connectedness: **I feel close to people at this school.**



Grade	2016-17	2017-18	2018-19	2019-20
7	63	61	58	
9	61	56	58	
11	54	49	52	
NT	40	36	41	

% Agree + Strongly Agree

CHKS Santa Maria Schools
 School Connectedness: **I am happy
 to be at this school.**



Grade	2016-17	2017-18	2018-19	2019-20
7	73	63	64	
9	66	62	57	
11	59	53	53	
NT	67	73	63	

% Agree + Strongly Agree

CHKS Santa Maria Schools
 School Connectedness: **I feel like I
 am part of this school.**



Grade	2016-17	2017-18	2018-19	2019-20
7	66	56	58	
9	58	52	49	
11	49	47	47	
NT	63	62	48	

% Agree + Strongly Agree

Violence Perpetration



Safe Schools
Healthy Students

Violence Perpetration: **Been in a physical fight** (past 12 months)



Grade	2016-17	2017-18	2018-19	2019-20
7	11	16	17	
9	10	11	10	
11	6	8	8	
NT	11	11	9	

**Violence Perpetration: Been offered, sold,
or given illegal drug (past 12 months)**



Grade	2016-17	2017-18	2018-19	2019-20
7	8	13	11	
9	18	17	16	
11	20	19	24	
NT	16	13	16	

Violence Perpetration: **Damaged school property on purpose** (past 12 months).



Grade	2016-17	2017-18	2018-19	2019-20
7	4	7	7	
9	4	5	4	
11	4	3	3	
NT	3	3	4	

CHKS Santa Maria Schools

Violence Perpetration: **Carried a gun** (past 12 months)



Grade	2016-17	2017-18	2018-19	2019-20
7	1	2	2	
9	1	1	2	
11	1	1	1	
NT	2	3	3	

Violence Perpetration: **Carried any other weapon** (past 12 months).



Grade	2016-17	2017-18	2018-19	2019-20
7	3	4	6	
9	5	4	3	
11	3	4	3	
NT	9	4	7	

Violence Perpetration: **Been threatened or injured with a weapon** (past 12 months).



Grade	2016-17	2017-18	2018-19	2019-20
7	3	5	5	
9	3	3	4	
11	2	3	3	
NT	3	4	5	

Violence Perpetration: **Seen someone carrying a gun, knife, or other weapon** (past 12 months).



Grade	2016-17	2017-18	2018-19	2019-20
7	17	18	19	
9	13	12	9	
11	9	13	11	
NT	9	4	9	

5. Violence Victimization



Safe Schools
Healthy Students

CHKS Santa Maria Schools

School Safety: Been pushed, shoved, hit, etc.



Grade	2016-17	2017-18	2018-19	2019-20
7	26	30	31	
9	19	19	17	
11	14	14	13	
NT	10	7	10	

% harassed one or more times. (NT = non-traditional school)

CHKS Santa Maria Schools

School Safety: **Been afraid of being beaten up.**



Grade	2016-17	2017-18	2018-19	2019-20
7	21	22	24	
9	13	12	12	
11	7	10	9	
NT	7	7	5	

% harassed one or more times. (NT = non-traditional school)

School Safety: Had mean rumors, or lies spread about you.



Grade	2016-17	2017-18	2018-19	2019-20
7	30	32	35	
9	28	25	26	
11	26	29	27	
NT	20	15	13	

% harassed one or more times. (NT = non-traditional school)

School Safety: **Had sexual jokes, comments, or gestures made to you.**



Grade	2016-17	2017-18	2018-19	2019-20
7	19	21	25	
9	22	22	19	
11	23	24	24	
NT	11	11	13	

% harassed one or more times. (NT = non-traditional school)

CHKS Santa Maria Schools

School Safety: **Been made fun of because of your looks/way you talk.**



Grade	2016-17	2017-18	2018-19	2019-20
7	27	32	34	
9	25	23	23	
11	24	26	23	
NT	14	14	8	

% harassed one or more times. (NT = non-traditional school)

CHKS Santa Maria Schools

School Safety: Had your property stolen or deliberately damaged.



Grade	2016-17	2017-18	2018-19	2019-20
7	15	18	17	
9	15	15	12	
11	12	16	14	
NT	8	8	7	

% harassed one or more times. (NT = non-traditional school)

5. Harassment & Bullying



CHKS Santa Maria Schools
 Harassment & Bullying: **Gender**



Grade	2016-17	2017-18	2018-19	2019-20
7	5	6	6	
9	5	5	3	
11	4	5	6	
NT	4	3	2	

% harassed one or more times, past 12 months at school

Harassment & Bullying: **Race, Ethnicity, or National Origin**



Grade	2016-17	2017-18	2018-19	2019-20
7	12	13	12	
9	11	11	10	
11	12	12	10	
NT	6	5	3	

% harassed one or more times, past 12 months at school)

CHKS Santa Maria Schools
 Harassment & Bullying: **Religion**



Grade	2016-17	2017-18	2018-19	2019-20
7	4	5	4	
9	5	5	4	
11	4	5	5	
NT	4	2	3	

% harassed one or more times, past 12 months at school

Harassment & Bullying: **Because you are gay or lesbian or someone thought you were**



Grade	2016-17	2017-18	2018-19	2019-20
7	5	7	9	
9	6	6	6	
11	4	6	5	
NT	5	4	4	

% harassed one or more times, past 12 months at school)

Harassment & Bullying: **Physical or mental disability**



Grade	2016-17	2017-18	2018-19	2019-20
7	2	3	3	
9	3	3	3	
11	3	4	3	
NT	3	3	2	

% harassed one or more times, past 12 months at school)

6. Substance Use at School Past 12 months



CHKS Santa Maria Schools

% **Smoked cigarettes** (at school, past month)



Grade	2016-17	2017-18	2018-19	2019-20
7	1 / 2	1	1	
9	0	1	0	
11	0	1	0	
NT	2	1	2	

CHKS Santa Maria Schools

% Had at least one drink of alcohol at school (past month)



Grade	2016-17	2017-18	2018-19	2019-20
7	3 / 2	3	4	
9	5	4	3	
11	4	4	3	
NT	4	3	8	

H / W

CHKS Santa Maria Schools

% **smoked marijuana at school**



Grade	2016-17	2017-18	2018-19	2019-20
7	4	4	3	
9	4	5	5	
11	4	5	6	
NT	7	8	15	

CHKS Santa Maria Schools

% Used any other illegal drug at school (past month)



Grade	2016-17	2017-18	2018-19	2019-20
7	NA	3	1	
9	2	2	2	
11	2	1	1	
NT	2	2	3	



Other Indicators

Any Substance Use in Past Month



CHKS Santa Maria Schools
 % Any Alcohol Use in Past 30 Days



Grade	2016-17	2017-18	2018-19	2019-20
7	7	4	10	
9	16	10	9 / 8	
11	22	15	13 / 14	
NT	38	22	27 / 25	

MALE / FEMALE PERCENTAGES, WHEN SHOWN

CHKS Santa Maria Schools

% Any Marijuana Use in Past 30 Days



Grade	2016-17	2017-18	2018-19	2019-20
7	4	4	5	
9	10	10	10/11	
11	15	13	13/16	
NT	34	31	30/34	

MALE / FEMALE PERCENTAGES, WHEN SHOWN

CHKS Santa Maria Schools
 % Any Binge Drinking Use in Past 30 Days



Grade	2016-17	2017-18	2018-19	2019-20
7	2	1	2	
9	6	4	5	
11	10	7	7	
NT	22	11	22	

CHKS Santa Maria Schools

% Seriously Considered Suicide (past 12 months)



Grade	2016-17	2017-18	2018-19	2019-20
7	NA	NA	16	
9	13	16	14	
11	13	16	16	
NT	17	14	14	

With the switch to annual administrations to just 7th, 9th, and 11th graders... only one cohort pattern is viable at this time...

2014-15 (Grade 7)
2016-17 (Grade 9)
2018-10 (Grade 11)

After next year,

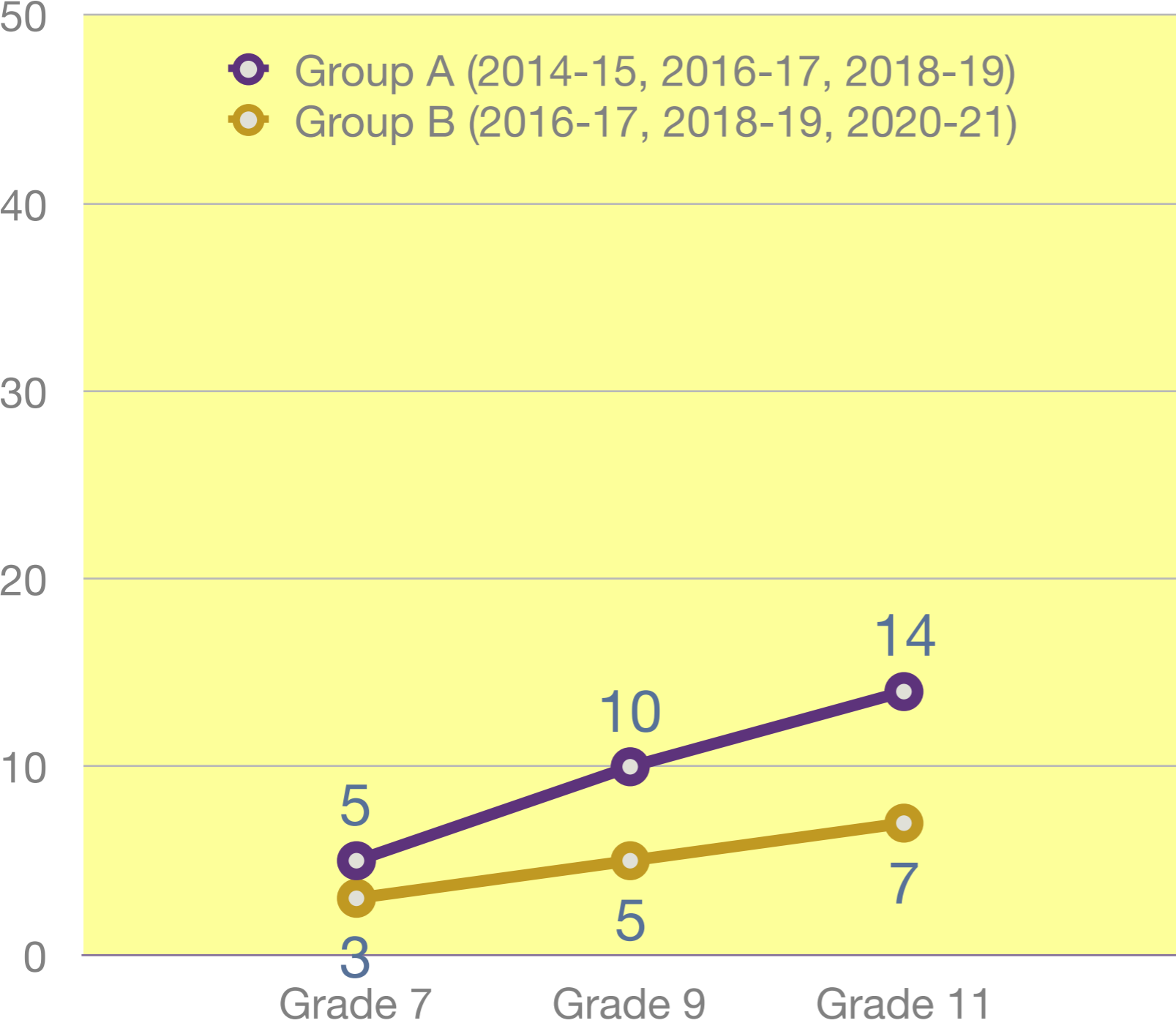
2015-2016
2017-2018
2019-2020

Can be added

What is needed for true monitoring?
Survey all students each year... Grades 7-12

% Any Marijuana Use in Past 30 Days

SAMPLE Slide



- * Summary
- * Summary
- * Summary
- * Group B shows what 50% lower each year would look like. Group is fake data