



# Student Safety & Bonding-Belonging

from ... CALIFORNIA STUDENT WELLNESS STUDY ... (Grades 9-12)

Students who feel safe at school report substantially higher levels of positive bonding with their schools than students who feel unsafe at school.

No. 5 of 9 in student safety and mental health series



How safe do you feel when you are at school?

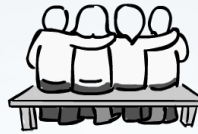
**Unsafe**

**Safe**



I feel close to people at school.

**35%**



**71%**

I am happy to be at this school.

**23%**



**71%**

I feel I am a part of this school.

**23%**



**66%**

The teachers at this school treat students fairly.

**28%**



**68%**

Percent responding *agree* or *strongly agree*

[Data Table](#)

[Study Information](#)